

**Barber Manor Area Water Main Upgrades
ECUA BID NO. CC2024-03**

JANUARY 31, 2024

ADDENDUM NO. 3

This addendum forms a part of the Contract Documents and modifies the original Specifications dated January 2024, as noted below. Acknowledge receipt of this Addendum in the space provided on the Bid Form. Failure to do so may subject Bidder to disqualification. This addendum consists of nineteen (19) pages, including all attachments.

SPECIFICATIONS:

The following changes were made to the Engineer's Estimate of Quantities:

1. Pay Item 36 was added. Pay Item note 36 was added to the pay item notes.
2. In an effort to adjust for market volatility for utility construction materials, ECUA may consider an adjustment in material costs for this project. Please carefully review the information below and follow the necessary steps for consideration of an adjustment in contract price. Failure to provide the necessary information noted hereinbelow with the Contractor's Proposal may result in a rejection of a contract adjustment (Change Order) request due to material cost escalation. Bidders shall provide a copy of the supplier quote for those construction materials (piping, fittings, and appurtenances) with the Contractor's Proposal for which may be considered for an adjustment in the contract price. Only those items submitted with the supplier's quote as part of the bid documents may be considered. To request an adjustment in the contract price, the awarded Contractor must obtain current material quotes (with the same brand and models) from three suppliers and submit them to the Engineer for review. At ECUA's and the Engineer's discretion, ECUA may provide a one-time change order for the cost increase of the materials only, with no additional mark-up, for up to 50% of the cost difference between the supplier's quote submitted with the Contractor's bid and the lowest of the three current supplier's quotes.

Per ECUA Code, change orders for less than \$100,000 for construction projects may be approved by the Executive Director. Change orders equal to \$100,000, or greater, for construction projects must be approved by the ECUA Board.

PLANS:

The following changes were made to the Construction Plans:

1. Sheet C-108 was modified to add a note for the overlay requirement of 1" SP9.5 on Barber Manor.

-END OF ADDENDUM

ENGINEER'S ESTIMATE OF QUANTITIES - APPROXIMATE ONLY BASE BID:

BASE BID

ITEM	DESCRIPTION	QUANTITY	UNIT	UNIT PRICE	AMOUNT
1	Mobilization (Max 5% of Bid)	1	LS		
2	Record Drawings Per Section 4000 of ECUA Specifications	1	LS		
3	County Right-of-Way Permit	1	LS		
4	Erosion Control	1	LS		
5	Maintenance of Traffic	1	LS		
6	Right-of-Way Restoration	1	LS		
7	6" Ductile Iron Water Main	630	LF		
8	6" PVC Water Main	2675	LF		
9	4" PVC Water Main	110	LF		
10	14" Casing	35	LF		
11	12" Casing	30	LF		
12	Long Water Service	24	EA		
13	Short Water Service	14	EA		
14	Short Copper Water Service	3	EA		
15	Relocate Existing Meter to Property Line	9	EA		
16	8"x6" Wet Tap	3	EA		
17	Cut and Cap Existing 6" Water Main	1	EA		
18	Cut and Cap Existing 4" Water Main	1	EA		
19	Cut and Cap Existing 2" Water Main	1	EA		
20	Cut out Existing 8" Tee and Straight Pipe Using Hymax	2	EA		
21	6"x6" Tee	3	EA		
22	4"x6" Reducer	2	EA		
23	6" Gate Valve and Box	8	EA		
24	Fire Hydrant Assembly	3	EA		
25	Flush Hydrant Assembly	2	EA		
26	Grout Fill Existing 6" Water Main	40	LF		
27	Grout Fill Existing 4" Water Main	35	LF		
28	Cut and Patch Asphalt Driveway	55	SY		
29	Cut and Patch Concrete Driveway	100	SY		
30	Stockpile and Replace Existing Gravel Driveway	175	SY		
31	Cut and Patch Asphalt Roadway (Per County Standards)	335	SY		
32	Remove Existing Valve Box and Backfill	6	EA		
33	Remove Existing Fire Hydrant and Backfill	1	EA		
34	Prep Work for 8" Inserta Valve	2	EA		
35	Long Copper Water Service	1	EA		
36	1-inch SP9.5 Asphalt Overlay with prep work to include sweeping and tack coat	870	SY		

Base Bid Total = _____

Base Bid Written _____

Base Bid Pay Item Descriptions

Pay Item 1. Includes all expense for the General Conditions of the contract including but not limited to insurance, bonds, taxes, warranty. Also includes all testing for pavements, backfill/compaction, concrete, piping. This item is limited to 5% of total base bid.

Pay Item 2. Includes all items required to provide ECUA with record drawings per ECUA Specification 4000 in the Engineering Manual.

Pay Item 3. Obtain permit from Escambia County for all work in the public rights-of-way for the Barber Manor Water Main Replacement project. The permit fee is included in this pay item.

Pay Item 4. Includes the control of siltation runoff from the construction area. Means and methods shall be incorporated per the "Florida Stormwater Erosion and Sedimentation Control Manual" latest edition. Compensation will be for furnishing all materials, labor, equipment, tools and incidentals required for the work.

Pay Item 5. Includes all items associated with a Maintenance of Traffic. Maintenance of Traffic shall conform to current Escambia County and FDOT standards. This item shall include any necessary notifications and permit fees.

Pay Item 6. This pay item includes the restoration of the existing right-of-way to preconstruction condition or better. Pricing shall include all materials and labor necessary to meet preconstruction conditions.

Pay Items 7, 8, and 9. Payments shall be for providing all materials, labor, tools, equipment, and incidentals required for the work as needed. Includes excavation, backfill and compaction, including shoring, bracing as required. Temporary removal and replacement of existing obstacles, including minor relocation and repair of other utilities; and all required testing, disinfection and flushing. Payment for water main installations shall include the installation of pipe restraints, tracer wire, and required fittings. All items stated are to be included in the unit price of pipe unless individually identified in the bid form. Water mains shall be measured in linear feet by the specified pipe size along the pipe centerline with no deduction for fittings. Payment shall be based on the Contract unit price per lineal foot.

Pay Items 10 and 11. These items are for the installation of 14" or 12" Steel casing and shall include compensation for all steel casing, materials, labor, equipment, casing spacers and end caps, excess material haul and disposal, and all other incidental work and testing required by the plans and specifications for a complete system. Measurement for payment shall be straight line field measurement from end to end of the steel casing pipe.

Pay Items 12, 13, 14, and 35. These pay items are for new water service lines tied to the new water main. Water service lines shall be measured and paid for on a unit (per each) basis. Each service line installation shall include the main tap, corporation stop, service tubing, casing PE (long service) and curb stop with connection to the existing water meter and meter box. Payment shall be for providing all materials, labor, tools, equipment, casing install, flushing, testing and incidentals, required for the work as needed for a complete operational unit. No open roadway cuts are allowed for the long services.

Pay Item 15. This pay item is for the relocation of existing water meter to the right-of-way/property line. The work is to include all labor and materials necessary to connect to the existing house service line and relocate the existing meter box.

Pay Item 16. This item includes Taps on Pressurized Lines – Taps on pressurized lines shall be measured and paid for on a unit price (per each) basis to include tapping sleeve, tapping valve, and valve box complete, in-place. Taps are listed by main and branch diameters. Payment shall be for providing all materials, labor, tools, equipment, and incidentals required for the work as needed for a complete operational unit.

Pay Item 17, 18, and 19. These pay items are to include all necessary material and labor to cut and cap the existing transite and galvanized water mains. This pay item is to include the excavation and backfill to perform the required task.

Pay Items 20. This item includes all labor and materials necessary to cut out an existing transite tee and straight pipe using Hymax fittings. This pay item is to include the excavation and backfill to perform the required task.

Pay Items 21 and 22. Payment for Water Main Fittings including bends, flow thru plug, tees, crosses shall be measured and paid for on a unit (per each) basis. This pay item includes all joint restraints and tracer wire per fitting and compensation will be for furnishing all materials, labor, equipment, tools and incidentals required for the work per fitting.

Pay Item 23. Valves – Water main valves inclusive of required valve boxes or other appropriate appurtenances shall be measured and paid for on a unit (per each) basis. Valves are listed by size and type. This pay item includes all joint restraints and tracer wire per valve and compensation will be for furnishing all materials, labor, equipment, tools and incidentals required for the work per valve

Pay Item 24. Fire Hydrant Assembly - shall be paid for on a unit (per each) basis to include a complete installed assembly. Fire hydrant assemblies shall include the installed water main tee, lead valve and box, connectors (up to 10 feet of lateral distance), gravel pack, extensions, offset connectors and fire hydrant. This pay item also includes all joint restraints and tracer wire and compensation will be for furnishing all materials, labor, equipment, tools and incidentals required for the work per each fire hydrant assembly.

Pay Item 25. Flush Hydrant Assembly - shall be paid for on a unit (per each) basis to include a complete installed assembly. Flush hydrant assemblies shall include the installed water main, lead valve and box, connectors (up to 10 feet of lateral distance), gravel pack, extensions, offset connectors and fire hydrant. This pay item also includes all joint restraints and tracer wire and compensation will be for furnishing all materials, labor, equipment, tools and incidentals required for the work per each fire hydrant assembly.

Pay Items 26 and 27. These items include the labor and materials required to abandon portions of the 6" and 4" water mains by grout filling. This line item is to also include the proper removal and disposal of any transite pipe as required to perform this operation.

Pay Item 28. Item includes the clean edge saw cut and the removal/disposal/replacement of the asphalt driveway as shown on the plans. Item includes adequate backfill and compaction of the removal area to match adjacent grades. Asphalt overlay shall match existing with a minimum thickness of 1" using SP9.5.

Pay Item 29. Item includes the removal of existing concrete to the nearest joint in the driveway. Replace concrete to match thickness with a minimum thickness of 4". Concrete shall meet Escambia County specifications. Provide adequate subgrade/base per the contract documents and referenced details. Units provided are based on a 5' width cut. Saw cutting of driveways with existing joints is not permitted. In the condition that a concrete driveway does not have any joints, the contractor shall be allowed to saw cut a 5' wide section and install joints.

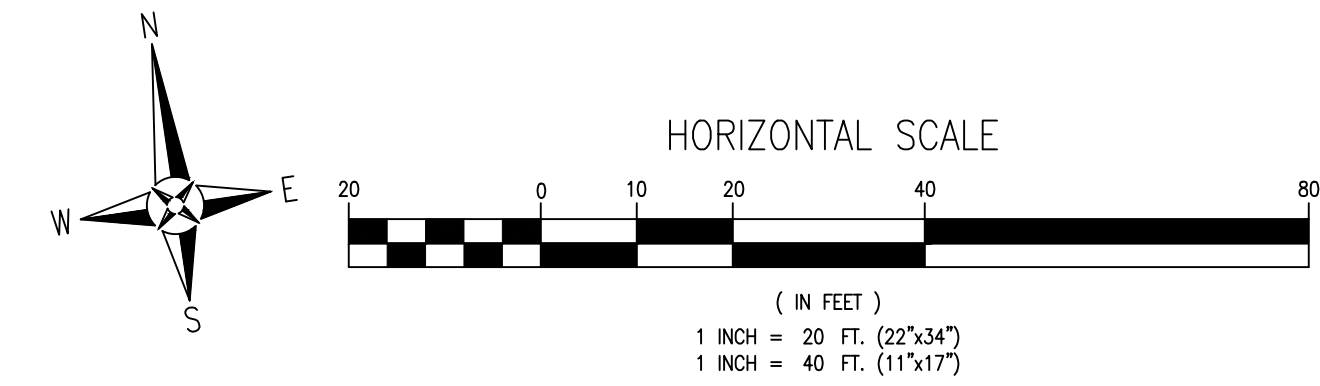
Pay Items 30. Item includes the replacement after disturbance/removal of a gravel driveway due to watermain construction. Gravel shall match existing type/gradation and shall match depth with a minimum depth of 4" compacted in place.

Pay Item 31. Item includes the clean edge saw cut and the removal/disposal/replacement of the asphalt roadway per County Standards as shown on the plans. Item includes adequate backfill and compaction of the removal area to match adjacent grades. Asphalt overlay shall match existing with a minimum thickness of 1" using SP9.5.

Pay Items 32 and 33. These items include the removal and back filling of existing valve boxes and hydrants. Pricing shall include all material and labor to complete.

Pay Items 34. This item is to include the excavation and backfill of existing watermain to measure pipe diameter and provide to ECUA so the correct Inserta valve is ordered. Once the Inserta valve is acquired the contractor is to coordinate with ECUA the date of the install and excavate and backfill the water main as necessary for ECUA to install the Inserta valve.

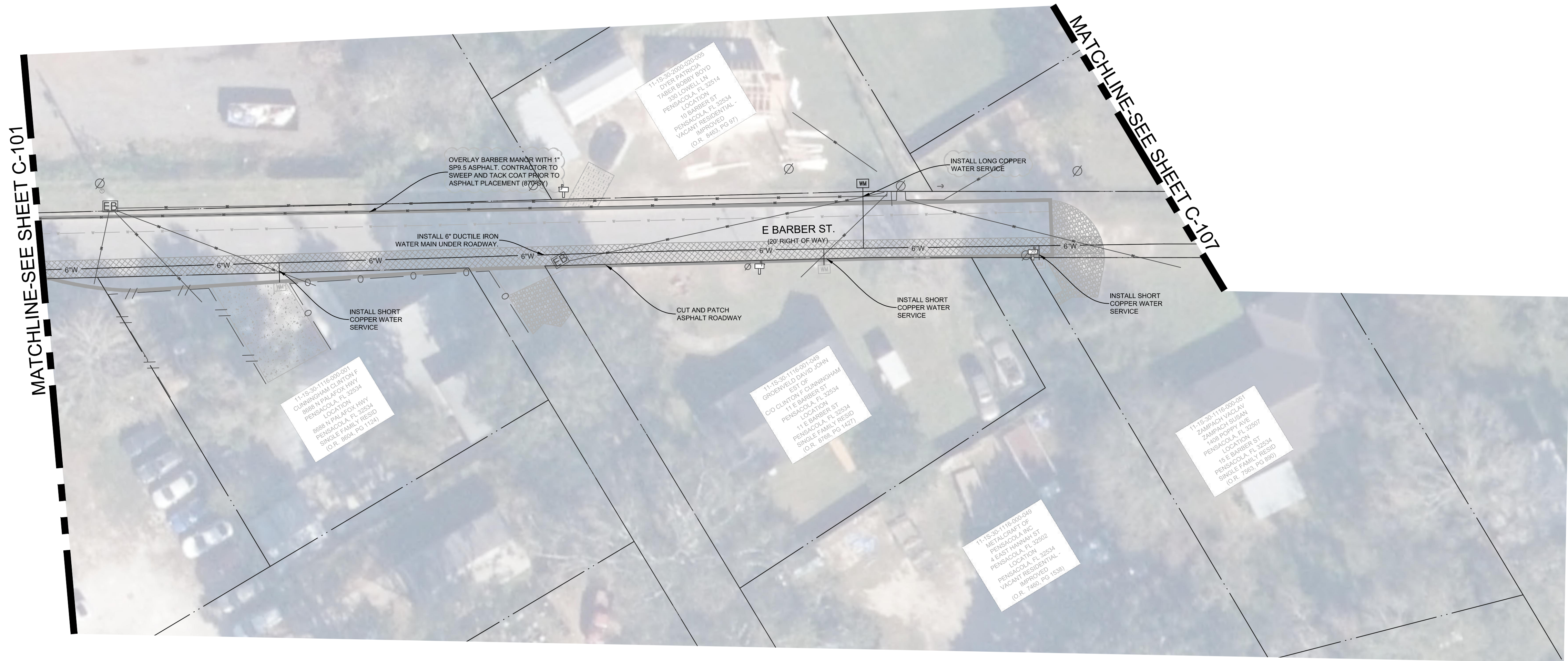
Pay Items 36. This item is to include the placement of 1-inch of SP9.5 asphalt over existing asphalt. The item is to also include the sweeping and placement of tack coat prior to the placement of the asphalt.



— O — O — O —	EXISTING CHAIN LINK FENCE	— DHU —	OVERHEAD UTILITIES	⬮	BENCHMARK	⚡	FIRE HYDRANT
— X — X — X — X —	EXISTING WOODEN FENCE	— BT —	BURIED TELEPHONE LINE	⊘	UTILITY POLE	⛶	WATER METER
— · · · · ·	LOT LINE	— G —	GAS LINE	⌵	GUY ANCHOR	⛶	WATER VALVE
— — — — —	RIGHT-OF-WAY LINE	— BE —	BURIED ELECTRIC LINE	⚡	LIGHT POLE	⊕	CLEANOUT
— — — — — W	WATER LINE	— FOC —	BURIED FIBER OPTIC CABLE	⛶	TELEPHONE BOX	Ⓢ	SEWER MANHOLE
— — — — — SS	SEWER LINE (GRAVITY)	— BTV —	BURIED TV LINE	⛶	GAS VALVE	Ⓢ	STORMWATER MANHOLE
— — — — —	FORCE MAIN						

ADDITIONAL NOTES:

1. ALL EXISTING WATER MAINS LOCATED UNDER ROADWAYS SHALL BE GROUT FILLED FOR ABANDONMENT ONCE NEW MAIN IS IN SERVICE. GROUT FILL SHALL EXTEND FROM THE EDGE OF PAVEMENT TO EDGE OF PAVEMENT AS A MINIMUM.
2. ALL ASBESTOS PIPE THAT IS REMOVED SHALL BE HANDLED AND DISCARDED IN ACCORDANCE WITH FDEP AND EPA STANDARDS.
3. CONCRETE DRIVEWAYS MUST BE REPLACED FROM JOINT TO JOINT.
4. CONTRACTOR WILL REQUIRE APPROPRIATE LICENCE FOR WORK PERFORMED ON BACK SIDE OF METER OR HIRE A LICENSED PLUMBER.
5. CONTRACTOR IS RESPONSIBLE FOR ALL REQUIRED WATER SHUT OFF NOTIFICATIONS TO CUSTOMERS THAT WILL BE AFFECTED DURING THE OUTAGE.



REVISIONS		DESCRIPTION	
#	DATE	BY	#
1			
2			
3			
4			
5			

BARBER MANOR AREA WATER MAIN UPGRADES

E BARBER ST

RW0054 / CC2024-03



Drawn:	DF
Designed:	MER
Checked:	MER
Date:	11/15/2023
Sheet No.	C-108